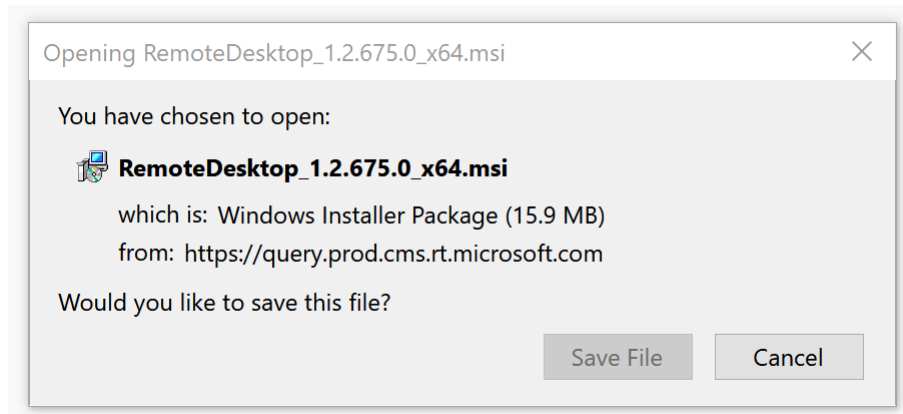


Connect to your GMIT PC – App Install

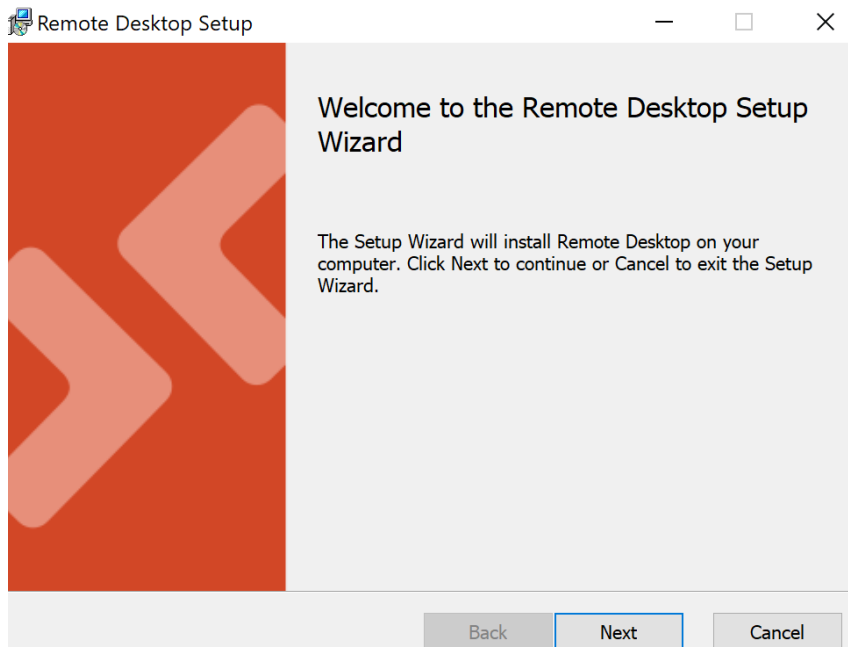
To remotely connect to your GMIT PC you will require the following:

- Your GMIT login details (email address and password)
- Your Multi Factor Authentication device (usually your mobile phone)
- The IP address of the device you wish to connect to (you will find this number on the desktop of your GMIT PC) if you are not in a position to access your GMIT PC you should contact your local IT Technician who will be able to provide this number to you.

Install the Remote Desktop App available for a windows device [HERE](#) (For other Operating Systems click [HERE](#))



Click “Save File” and double click the file when downloading is finished.



Choose the default options and click “Finish” to complete the App install

Launch the application in the usual manner and click “Subscribe”

Remote Desktop

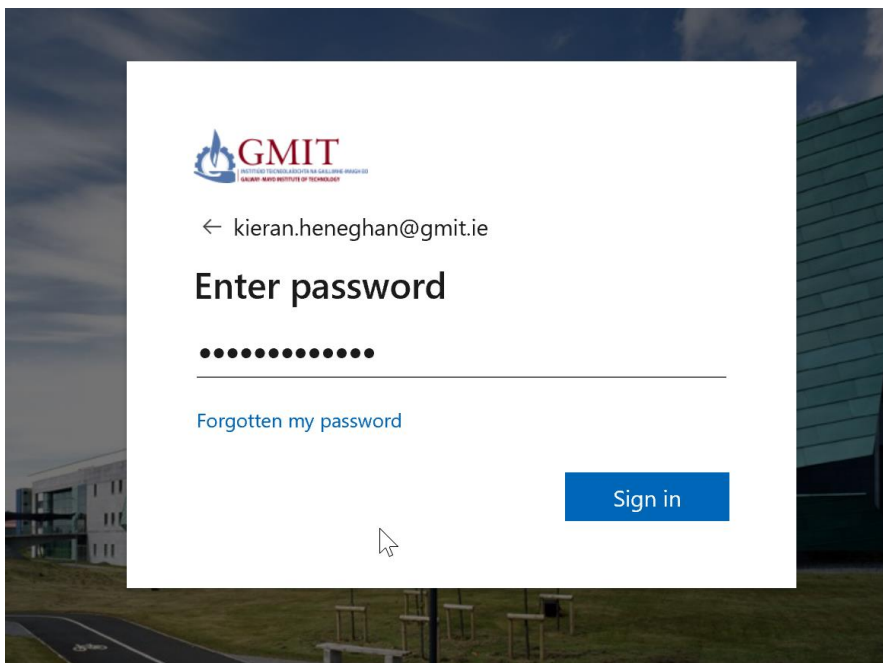
Let's get started

Subscribe to access managed apps and desktops provided by your organisation. These resources will be available

Privacy settings for managed resources have been preset by your organisation. [Learn more](#)

Subscribe

You will be prompted to login using your GMIT Email address and password



Once logged in you will see the devices and apps which you have access to. to login to your work PC click “Connect to Work” and login using your GMIT account. You may be challenged to Multi Factor Authenticate, please do so in the usual manner (Text, App).

Remote Desktop

GMIT



Connect To
Work

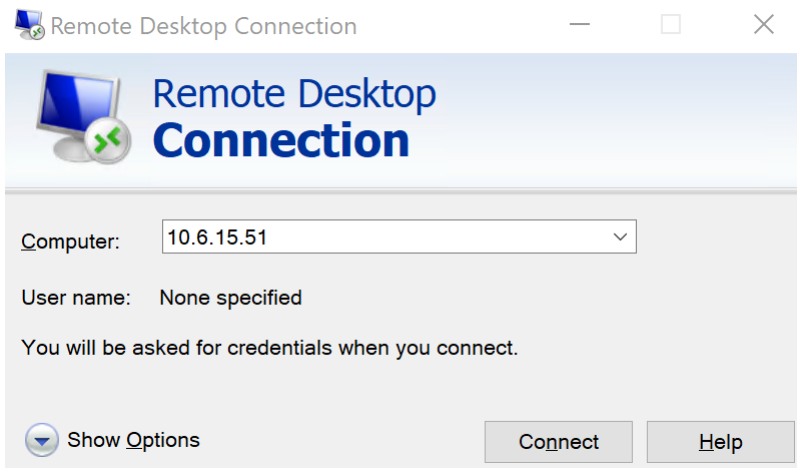


Castlebar -
Desktop

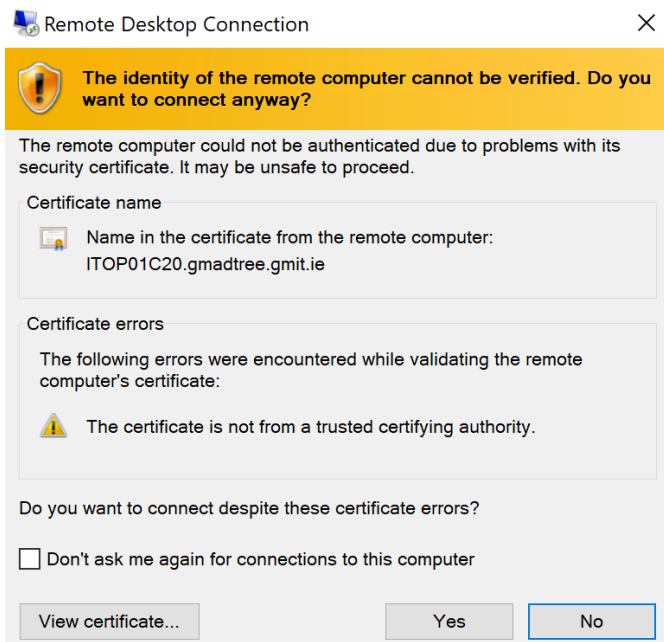


Science
Desktop

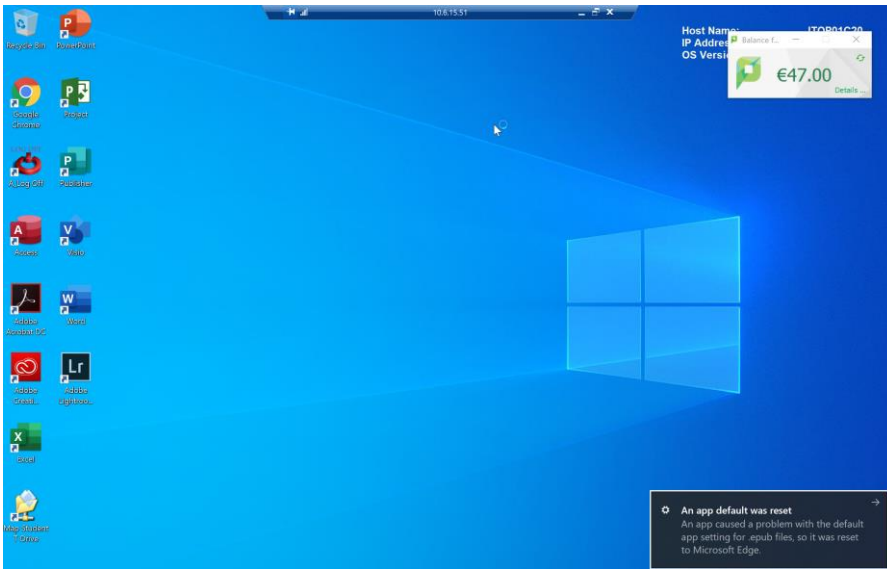
You will now see a “Remote Desktop Connection” box, enter the IP Address for the computer you wish to connect to in the “Computer” field then click “Connect”



You will now be asked to provide your GMIT password followed by a popup window regarding “Certificates”, simply tick the box “Don’t ask me again” and finish by clicking “Yes”



You are now connected to your work device and can proceed as normal



It is important to remember that when you are finished your work you should choose the “Disconnect” option. Ensure that you do not “Shut Down” the device as you will be unable to connect later.

